

Indiana Collegiate Action Network

Results of the
**Indiana College
Substance Use Survey**
2010



**Results from the
Indiana College Substance Use Survey
2010
IUPUI**

by

Rosemary King, M.P.H.
Mi Kyung Jun, Ph.D.

Indiana University

Indiana Prevention Resource Center
501 N. Morton St., Suite 110
Bloomington, IN 47404
www.drugs.indiana.edu

Online survey designed by Junghun Lee, M.S.

Funded by the Indiana Family and Social Services Administration,
Division of Mental Health and Addiction
through a contract with the Indiana Collegiate Action Network

TABLE OF CONTENTS

List of Tables and Figures.....	ii
Introduction.....	1
Key Findings.....	2
Annual Prevalence.....	2
Monthly Prevalence.....	4
Binge Drinking.....	6
Consequences.....	7
Age of First Time Use.....	9
Alcohol Selection and Availability.....	10
Perception of Peer Behaviors.....	13
Gambling Behavior.....	15
Characteristics of Survey Participants.....	17
Frequency Tables.....	19

LIST OF TABLES AND FIGURES

Table 1. Response rate.....	1
Table 2. Number of usable surveys	1
Table 3. Percentage of students reporting use of select substances in past year.....	3
Table 4. Percentage of students reporting use of select substances in past month.	5
Table 5. Percentage of students reporting binge drinking in the past two weeks.	6
Figure 1. Number of times students binge drank in the past two weeks.	6
Table 6. Percentage of students reporting select consequences as a result of their drinking.	7
Table 7. Percentage of students reporting select consequences as a result of their drug use.	8
Table 8. Average age of first time use of select substances.	9
Table 9. Three easiest ways of getting alcohol by underage students.	10
Figure 2. Percentage of underage students who purchased alcohol.	11
Figure 3. Methods underage students use to purchase alcohol.	11
Figure 4. Places where underage students purchase alcohol.....	12
Figure 5. Usual types of alcohol students drink.....	12
Table 10. Perception of mean number of drinks the typical student consumes.	13
Table 11. Perception of other students approval/disapproval of select behaviors.....	14
Table 12. Percentage of students reporting gambling in past year.....	15
Figure 6. Percentage of students who reported weekly or more frequent gambling behavior.....	16
Table 13. Percentage of students reporting select consequences as a result of their gambling.	16
Table 14. Demographic characteristics of survey participants	17

INTRODUCTION

A total of 2,987 randomly-selected students at IUPUI were invited to participate in the 2010 Indiana College Substance Use Survey. A total of 521 students responded to the survey, for a response rate of 17.4%.

Table 1. Response rate

Number of students invited to participate	Number of respondents	Response Rate
2,987	521	17.4%

Three criteria were used to clean the data. Surveys were discarded if any of the following conditions were met:

- gender information missing,
- inconsistent responses on substance use across time measures (monthly vs. annually) for more than one-third of the substances queried, and
- patterns of responses were pharmacologically implausible (i.e., a combination of drugs and frequencies of use whose cumulative effect would be lethal).

A total of 57 surveys were rejected due to meeting at least one of the criteria, leaving 464 usable surveys (89.1%).

Table 2. Number of usable surveys

	Frequency	Percent
No gender reported	41	7.9
Surveys rejected due to error check	16	3.1
Total number of usable surveys	464	89.1
Total	521	100.0

KEY FINDINGS

ANNUAL PREVALENCE

Three-fourths of the IUPUI students reported using alcohol in the past year, including almost half of the students under 21 (48%). One quarter of the students (24%) smoked cigarettes and nearly as many (22%) smoked tobacco with a hookah/water pipe. Use of marijuana in the past year by IUPUI students was significantly lower than the statewide rate (all Indiana students participating in the 2010 survey) (16% vs. 22%). One in nine of the IUPUI students (11%) reported taking prescription medications not prescribed to them. The misuse of prescription medications was the most common substance used after alcohol, tobacco, and marijuana.

Male IUPUI students reported significantly higher rates of cigar and smokeless tobacco use than the female students. Over one-fourth of the male IUPUI students (28%) smoked cigars in the past year and one in ten (10%) used smokeless tobacco. Males also reported statistically higher rates of cocaine, hallucinogens, and “other illegal drugs” than female students. Rates of alcohol, cigarettes, and marijuana use were not significantly different between the genders.

When analyzed by age, almost eight in ten students 21 or older (79%) reported drinking alcohol in the past year, compared to 48% of the underage students. Students under 21 were much more likely to report smoking tobacco with a hookah/water pipe (35% vs. 19%), and for use of opiates (6% vs. 2%).

Table 3. Percentage of students reporting use of select substances in past year

Substance	All Students			By Gender		By Age		
	IUPUI	Indiana		Males	Females	Under 21	21 or Over	
Cigarettes	24.1	27.6		28.8	21.1	27.7	23.6	
Cigars	16.4	20.6	*	28.3	8.6	***	23.1	15.3
Chewing/smokeless tobacco	5.2	8.1	*	9.8	2.1	***	3.1	5.5
Smoking tobacco with hookah/water pipe	21.6	22.9		22.3	21.1	35.4	19.3	**
Alcohol	74.8	72.9		73.9	75.4	47.7	79.2	***
Marijuana	16.2	22.0	**	19.0	14.3	16.9	16.0	
Cocaine	3.7	3.1		7.1	1.4	**	4.6	3.5
Hallucinogens	3.7	3.8		6.5	1.8	**	7.7	3.0
Opiates	2.4	2.1		3.8	1.4		6.2	1.8 *
Designer drugs	3.0	3.1		4.9	1.8		6.2	2.5
Inhalants	1.9	1.9		3.3	1.1		1.5	2.0
Steroids	2.2	1.9		2.7	1.8		1.5	2.3
Other illegal drugs	2.8	3.0		4.9	1.4	*	4.6	2.5
Prescription pills not prescribed to student	11.4	10.4		13.6	10.0		12.3	11.3
Prescription medicines to get high	5.6	4.9		7.6	4.3		9.2	5.0
Over-the-counter medications to get high	1.9	2.9		2.7	1.4		1.5	2.0
Methamphetamine	1.7	1.7		2.7	1.1		1.5	1.8

Note: Statistically significant difference at: * p < .05, **p < .01, ***p < .001

MONTHLY PREVALENCE

The percentage of IUPUI students reporting alcohol use in the past month was significantly higher than the statewide rate (all students participating in the 2010 survey). Almost three-fourths of the IUPUI students drank alcohol in the past month (72%), including half of the underage students (49%). One in six of the IUPUI students (17%) smoked cigarettes in the past month, and one in ten (10%) used marijuana, which was significantly lower than the statewide rate (15%).

Male IUPUI students used cigars and smokeless tobacco at significantly higher rates than females, with approximately one in seven IUPUI students (15%) smoking cigars and 5% using smokeless tobacco. The rate of marijuana use was also significantly higher for males, with 13% reporting use in the past month compared to 7% of the female students. Male IUPUI students also reported statistically higher rates of cocaine and hallucinogens use in the past month than female students. There was no statistical difference between the genders regarding alcohol or cigarette use.

Three quarters of the students 21 years of age or older (75%) reported drinking alcohol in the past month, compared to half (49%) of the underage students. One quarter of the students under 21 (26%) smoked cigarettes in the past month, compared to 16% of the older students. Students under 21 were also much more likely to smoke tobacco with a hookah/water pipe, with one in five (20%) reporting the behavior, compared to 8% of the older students. The younger students also reported significantly higher rates of hallucinogens, opiates and designer drugs.

Table 4. Percentage of students reporting use of select substances in past month

Substance	All Students			By Gender			By Age	
	IUPUI	Indiana		Males	Females		Under 21	21 or Over
Cigarettes	17.2	20.4		21.2	14.6		26.2	15.8 *
Cigars	8.2	10.9		14.7	3.9	***	13.8	7.3
Chewing/smokeless tobacco	2.2	4.9	**	4.9	0.4	**	1.5	2.3
Smoking tobacco with hookah/water pipe	9.5	11.4		11.4	8.2		20.0	7.8 **
Alcohol	71.6	65.7	*	71.2	71.8		49.2	75.2 ***
Marijuana	9.5	14.6	**	13.0	7.1	*	10.8	9.3
Cocaine	0.6	0.9		1.6	0.0	*	1.5	0.5
Hallucinogens	0.9	0.9		2.2	0.0	*	3.1	0.5 *
Opiates	0.6	0.4		1.1	0.4		4.6	0.0 ***
Designer drugs	0.2	0.6		0.5	0.0		1.5	0.0 *
Inhalants	0.0	0.3		0.0	0.0		0.0	0.0
Steroids	0.2	0.3		0.5	0.0		0.0	0.3
Other illegal drugs	0.6	0.8		1.1	0.4		0.0	0.8
Prescription pills not prescribed to student	6.7	6.1		9.2	5.0		7.7	6.5
Prescription medicines to get high	1.7	2.2		2.7	1.1		4.6	1.3
Over-the-counter medications to get high	0.4	0.8		0.5	0.4		0.0	0.5
Methamphetamine	0.0	0.2		0.0	0.0		0.0	0.0

Note: Statistically significant difference at: * p < .05, **p < .01, ***p < .001

BINGE DRINKING

Over one-quarter of the IUPUI students (28%) reported binge drinking in the past two weeks. Binge drinking was defined in the Indiana College Substance Use Survey as four or more drinks in one sitting for females and five or more drinks in one sitting for males. This gender-specific standard follows the definition established by the National Institute on Alcohol Abuse and Alcoholism. The rate of binge drinking by IUPUI students was statistically lower than the rate of all Indiana students participating in the 2010 survey. Male IUPUI students reported significantly higher rates of binge drinking in the past two weeks than females, with over one-third of the males (37%) reporting the behavior compared to approximately one in five (22%) of the female students. Students 21 or over were more likely to binge drink than underage students (30% vs. 17%).

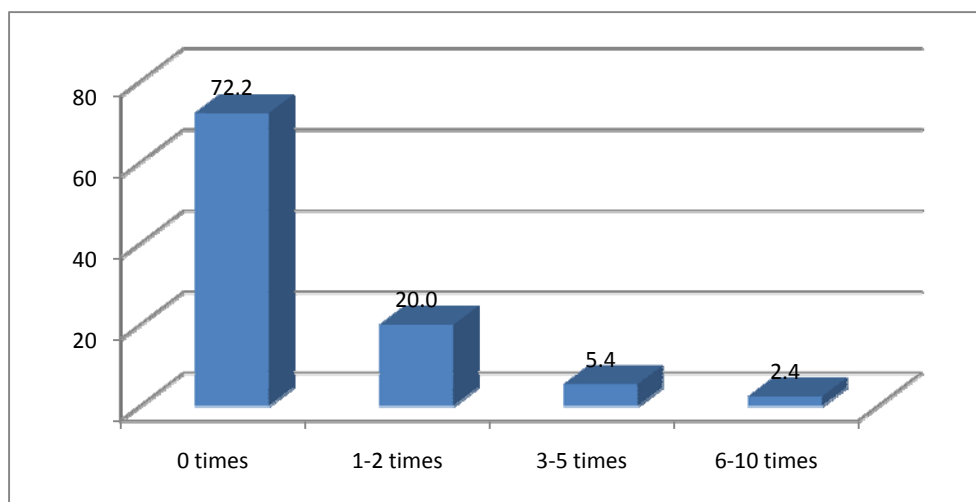
One in five IUPUI students reported binge drinking once or twice in the past month, and 8% reported doing so three or more times.

Table 5. Percentage of students reporting binge drinking in the *past two weeks*

	All Students			By Gender			By Age		
	IUPUI	Indiana		Males	Females		Under 21	21 or Over	
Binge Drinking	27.8	36.8	***	37.0	21.8	***	16.9	29.6	*

Note: Statistically significant difference at: * $p < .05$, *** $p < .001$

Figure 1. Percentage of students reporting select number of times they binge drank *in the past two weeks*



CONSEQUENCES

Table 6 presents findings on select consequences reported by IUPUI students as a result of their drinking. Almost one-fourth of the IUPUI students who drank alcohol in the past six months (24%) reported driving a car while under the influence, and one in five (19%) reported feeling bad about their drinking. One in six of the students (16%) blacked out from drinking and one in nine (11%) reported engaging in risky sexual behavior as a result of their drinking. Rates of consequences as a result of drinking were significantly lower for IUPUI students than for all Indiana students participating in the 2010 survey for many of the consequences investigated.

Table 6. Percentage of students who reported select consequences as a result of drinking (n = 379)

Consequence	IUPUI	Indiana	
Spouse/partner or parents worried or complained about your drinking	9.8	13.5	*
Felt bad about your drinking	19.3	27.2	**
Been unable to stop drinking when you wanted to	7.7	10.0	
Attended Alcoholics Anonymous	0.3	1.0	
Created problems between you and your spouse/partner	8.4	11.8	
Gotten into trouble at work or school because of drinking	2.6	5.1	*
Neglected your obligations, your family, or your work for 2 or more days in a row because you were drinking	2.6	4.4	
Gone to anyone for help to reduce your drinking or your potential problems due to drinking	1.8	1.9	
Been in the hospital because of drinking	0.8	0.8	
Been arrested even for a few hours because of drinking	1.8	2.4	
Been arrested for drunk driving or driving after drinking	0.8	1.2	
Driven a car while under the influence	23.5	20.4	
Gotten into physical fights when drinking?	4.0	5.8	
Experienced unwanted sexual attention such as being touched when you don't want to be, forced kissing, etc.	4.2	11.2	***
Engaged in risky sexual behavior such as having unprotected sex or sex with someone you just met because you were drinking	11.1	13.9	
Missed class or assignments	9.5	16.3	**
Forgot where you were or what you did (blacked out)	15.8	26.3	***

Note: Statistically significant difference at: * p < .05, **p < .01, ***p < .001

Almost one-third of IUPUI students who used drugs in the past year (31%) had driven a car while under the influence of drugs. Approximately one-fourth of the students reported abusing more than one drug at a time (24%) or feeling bad about their drug use (24%). Ten percent had missed class or an assignment due to drug use.

Table 7. Percentage of students who reported select consequences as a result of drug use (n = 132)

Consequence	IUPUI	Indiana
Abused more than one drug at a time	23.5	25.1
Been unable to stop using drugs when you wanted to	9.8	9.0
Ever had blackouts or flashbacks as a result of drug use	6.8	9.8
Ever felt bad or guilty about your drug use	23.5	26.0
Had your spouse/partner complain about your involvement with drugs	7.6	9.5
Neglected your family because of your use of drugs	6.1	4.8
Engaged in illegal activities in order to obtain drugs	6.1	6.8
Got into physical fights because you were using drugs	1.5	1.8
Ever experienced withdrawal symptoms (felt sick) when you stopped taking drugs	8.3	8.1
Had medical problems as a result of your drug use (e.g. memory loss, infections, convulsions, bleeding)	5.3	4.2
Driven a car while under the influence of drugs	31.1	24.8
Got into trouble at work because of drug use	2.3	1.8
Been in very vulnerable situations, such as a situation in which you could have been hurt and/or date raped when using drugs	4.5	5.2
Engaged in risky sexual behavior such as having unprotected sex or sex with someone you just met because you were using drugs	7.6	6.5
Failed a class because of drug use	2.3	1.6
Missed class or assignments due to drug use	10.6	10.1

AGE OF FIRST TIME USE

IUPUI students first used alcohol at an average age of 17.5 years which is statistically later than the age of all students who participated in the 2010 survey. IUPUI students' average age of initiation of cigars and smoking tobacco with a hookah/water pipe were also significantly earlier than the statewide average. Male IUPUI students reported significantly lower average age of first time use of marijuana and prescription medications not prescribed to them, while female students reported an earlier age of initiation of methamphetamine.

Table 8. Average age of first time use of select substances¹

Substance	All Students		By Gender			By Age			
	IUPUI	Indiana	Males	Females	Under 21	21 or Over			
Cigarettes	16.4	16.3	16.6	16.2	15.3	16.5			
Cigars	18.5	17.9	*	18.1	19.2	*	17.4	18.7	*
Chewing/smokeless tobacco	17.7	17.2		17.7	17.3		17.3	17.7	
Smoking tobacco with hookah/water pipe	19.7	18.5	***	19.3	20.1		18.2	20.1	***
Alcohol	17.5	17.1	*	17.4	17.5		15.8	17.7	***
Marijuana	17.2	17.1		16.4	17.8	***	16.3	17.3	
Cocaine	19.4	18.9		19.2	19.5		17.3	19.5	
Hallucinogens	17.8	17.9		17.9	17.7		17.1	17.9	
Opiates	18.0	18.3		17.3	18.8		17.1	18.3	
Designer drugs	19.3	18.9		19.0	19.6		19.0	19.4	
Inhalants	15.9	15.5		15.8	16.1		12.5	16.2	
Steroids	21.8	18.9		22.5	21.0			21.8	
Other illegal drugs	17.8	17.8		17.4	18.3		15.5	18.0	
Prescription pills not prescribed to student	18.3	18.0		17.3	19.2	*	16.6	18.5	
Prescription medicines to get high	17.6	17.6		16.9	18.4		16.6	17.8	
Over-the-counter medications to get high	17.3	16.8		17.2	17.4		14.5	17.7	
Methamphetamine	18.3	18.7		20.6	16.4	*		18.3	

Note: Statistically significant difference at: * p < .05, *** p < .001

¹ Average age was calculated using the mid-points of the age ranges that were provided as responses.

ALCOHOL SELECTION AND AVAILABILITY

Underage students who used alcohol in the past year were asked to identify the three easiest ways they obtain it (Table 9). Almost nine in ten students (89%) listed older friends as one of the top three ways to obtain alcohol, and almost that many (83%) listed off-campus parties as one of the three easiest ways. These rates indicate the substantial role that older friends and acquaintances play in how underage students obtain alcohol. One-quarter (25%) of the underage students listed parents (knowingly) as one of the top three ways to get alcohol. Because of the low number of underage students who responded to the survey (n=65) and those who drank alcohol in the past year (n=36), these results should be interpreted very cautiously.

Table 9. Three easiest ways of getting alcohol as reported by students who are under 21 and who used alcohol during the past year (n = 36)¹

	Most common response	2nd most common response	3rd most common response
First Easiest	Older friends (58.3%)	Off-campus private parties (16.7%)	From parents with their knowledge (11.1%)
Second Easiest	Off-campus private parties (50.0%)	Older friends (30.6%)	Older siblings (11.1%)
Third Easiest	Off-campus private parties (16.7%)	From parents with their knowledge (13.9%)	On-campus parties, older siblings (11.1%)

¹Underage students were asked to identify the first, second, and third easiest ways that they obtain alcohol. The top three responses in each category are reported in the table.

Fourteen percent of underage IUPUI students reported purchasing alcohol themselves, with over half of them (56%) being able to purchase without being asked for ID. Approximately one in five of the students who purchased alcohol themselves (22%) used someone else's ID, and one in nine (11%) used a fake ID. Bars were listed as the easiest place to purchase alcohol, followed by liquor stores and restaurants. Again, the reader is cautioned when interpreting these rates because of the small number of underage students who purchased alcohol themselves (n=9) (Figures 2, 3 & 4).

Figure 2. Percentage of students under 21 who reported purchasing alcohol (n = 65)

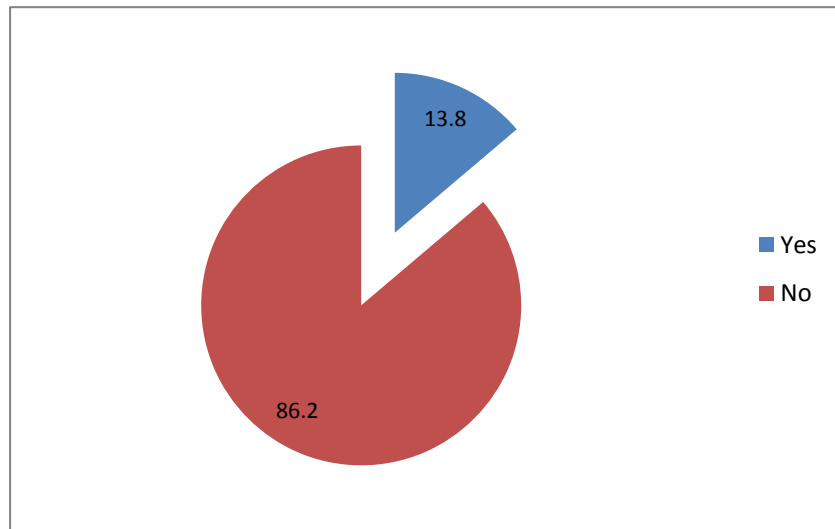


Figure 3. Percentage of students under 21 who purchased alcohol, by method of purchase (n = 9)

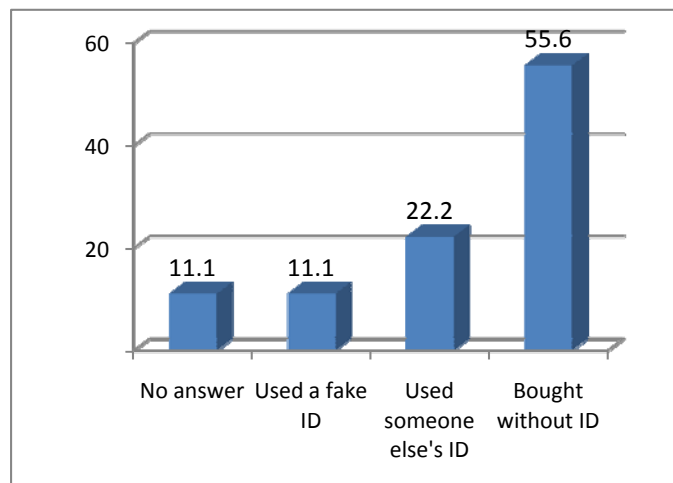
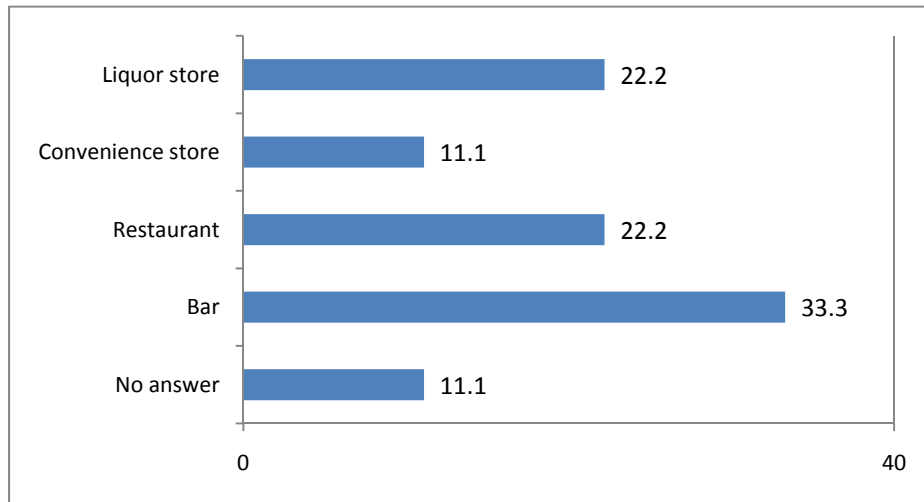
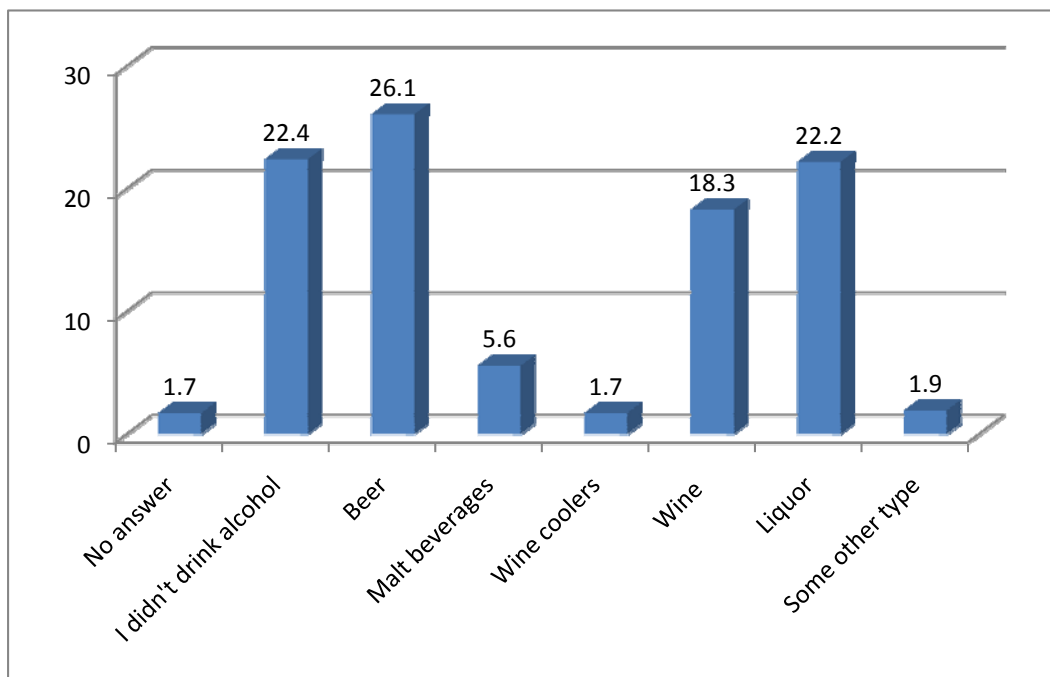


Figure 4. Percentage of students under 21 who purchased alcohol, by easiest place to purchase alcohol (n = 9)



IUPUI students (regardless of age) were asked what type of alcohol they usually drank. Beer was reported by over one-fourth of the students (26%) as the most common kind of alcohol they drank, followed by liquor (22%) and wine (18%).

Figure 5. Percentage of students (all ages) who reported select categories as the usual type of alcohol they drank in the past month



PERCEPTION OF PEER BEHAVIORS

Students were asked how many alcoholic drinks they thought the typical student at their school consumed the last time he or she partied/socialized. Students could provide any figure between 0 – 99. The average of the responses from IUPUI students was 5.5 drinks. Responses did not differ significantly between genders or age, or with the state rate.

Table 10. Mean number of drinks respondents thought the typical student consumed the last time he/she “partied/socialized” (range = 0 – 99)

	All Students		By Gender		By Age	
	IUPUI	Indiana	Males	Females	Under 21	21 or Over
Mean	5.5	5.9	5.8	5.4	6.7	5.3
Standard Deviation	6.9	7.8	9.2	4.8	11.6	5.7

The survey also asked participants how they thought other students on their campus felt about using certain substances (Table 11). An astonishingly small 13% thought their peers would disapprove (somewhat or strongly) of trying marijuana once or twice, and only 25% felt their peers would disapprove of smoking it occasionally. Just over half (53%) thought their peers would disapprove of smoking it regularly. Three out of ten IUPUI students (30%) thought their peers would disapprove of taking one or two drinks of alcohol nearly every day and half (49%) thought they would disapprove of having five or more drinks in one sitting. Approximately three-fourths of the students thought their peers would disapprove of trying cocaine, LSD or amphetamines once or twice, while more than eight out of ten thought their peers would disapprove of regular use of those substances.

Table 11. Percentage of students who thought other students on campus would approve/disapprove of select behaviors

	Strongly approve	Somewhat approve	Neither approve or disapprove	Somewhat disapprove	Strongly disapprove	No answer
Trying marijuana once or twice	15.9	42.7	26.3	6.3	7.1	1.7
Smoking marijuana occasionally	6.9	35.3	31.0	15.9	8.8	1.9
Smoking marijuana regularly	3.4	17.5	23.7	34.9	18.5	1.9
Trying cocaine once or twice	1.1	7.3	16.2	38.1	35.6	1.7
Taking cocaine regularly	0.6	0.9	8.8	17.7	70.0	1.9
Trying LSD once or twice	0.6	8.0	17.0	34.9	37.5	1.9
Taking LSD regularly	0.6	0.6	10.1	18.3	68.1	2.2
Trying amphetamine once or twice	1.3	7.3	16.8	30.2	42.7	1.7
Taking amphetamine regularly	0.4	2.2	9.7	19.4	65.7	2.6
Taking one or two drinks of an alcoholic beverage nearly every day	12.7	28.7	27.4	21.3	8.4	1.5
Taking three or four drinks nearly every day	5.2	12.7	22.2	28.0	30.2	1.7
Having five or more drinks in one sitting	7.5	14.7	27.4	23.9	24.6	1.9
Taking steroids for body building or improved athletic performance	1.3	5.0	21.1	32.1	37.9	2.6

GAMBLING BEHAVIOR

The most common form of gambling reported by IUPUI students was playing the lottery (32%), followed by gambling at a casino (21%). IUPUI students reported significantly higher rates of gambling at a casino than the statewide rate of all Indiana students participating in the 2010 survey, but significantly lower rates of playing cards at home for money (14%). Male students reported much higher rates of gambling than female students for several gambling behaviors. One in five male students played cards at home for money in the past year (20%), compared to 10% of the female students. Fifteen percent of the males gambled in betting pools and 10% bet on fantasy football. Students 21 or older were much more likely to gamble at a casino (24%) than younger students (3%).

Table 12. Percentage of students reporting gambling experiences in past year

Substance	All Students		By Gender		By Age	
	IUPUI	Indiana ¹	Males	Females	Under 21	21 or Over
Played cards at home	13.8	17.6 *	20.1	9.6 **	20.0	12.8
Gambled at a casino	21.1	14.5 ***	22.3	20.4	3.1	24.1 ***
Gambled on-line	1.7	3.3	4.3	0.0 ***	1.5	1.8
Bet on fantasy football/basketball	5.6	5.6	10.3	2.5 ***	6.2	5.5
Betting pools (ex: March Madness)	9.1	11.7	15.2	5.0 ***	10.8	8.8
Lottery	31.7	30.7	35.3	29.3	29.2	32.1
Placed bet with bookie	0.2	1.0	0.5	0.0	0.0	0.3

Note: Statistically significant difference at: * $p < .05$, ** $p < .01$, *** $p < .001$

¹One of the schools participating in the 2010 survey did not include the gambling questions so they are not represented in the state data.

Students were asked how frequently they gambled to assess the level of problem gambling. Less than two percent of the students reported playing the lottery (1.7%) at least once a week in the past year (Figure 6). The most common negative consequence of gambling reported by IUPUI students was feeling bad about their gambling (3%) (Table 13).

Figure 6. Percentage of students who reported weekly or more frequent gambling in past year, by gambling category

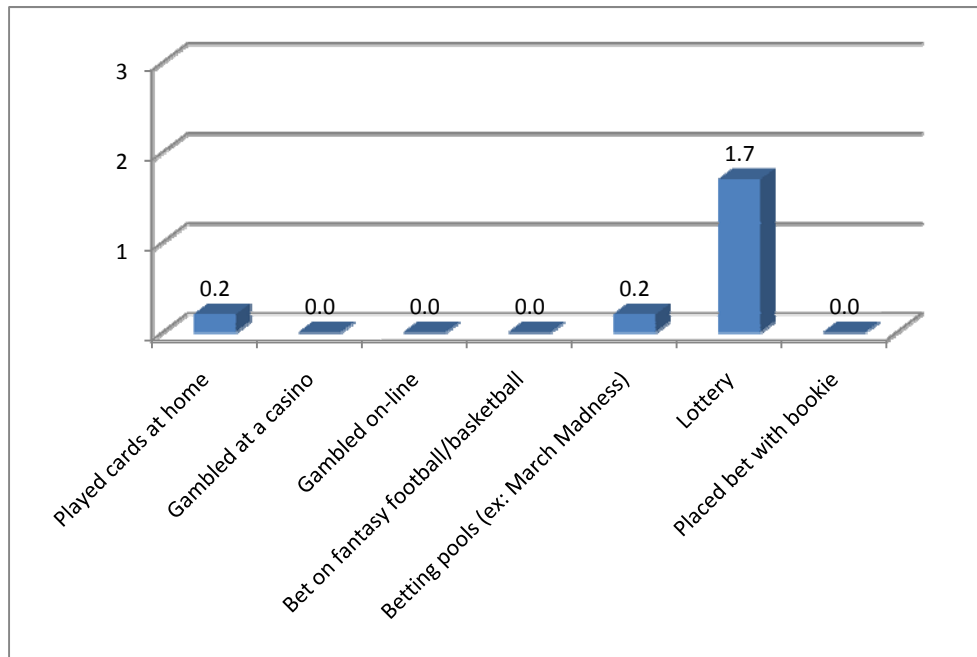


Table 13. Percentage of students who gambled in past year, who reported select consequences as a result of their gambling (n = 211).

Consequence	IUPUI	Indiana
Academic problems (missed class, did poorly on exam, lower grades)	0.0	0.3
Issues with legal system	0.0	0.2
Financial issues	0.5	2.4
Felt bad about gambling	2.8	4.7
Poor physical health (sleep issues, depression, poor nutrition, poor hygiene)	0.0	0.5
Issues with friends and family (lied, strained relationships, arguments)	0.0	1.0

CHARACTERISTICS OF SURVEY PARTICIPANTS

Three-fifths of the IUPUI survey respondents were female (60%), and almost nine in ten (86%) were 21 or older. The majority were White (83%) and non-Hispanic (96%). Over one-third of the IUPUI students (38%) were graduate/professional students and a near equal number (39%) were juniors or seniors. Only 19% classified themselves as freshmen or sophomores. Almost three-quarters (73%) were full-time, and almost all (95%) lived off-campus.

Table 14. Demographic characteristics of survey participants

	Frequency	%
Gender		
Male	184	39.7
Female	280	60.3
Age		
Under 21	65	14.0
21 or older	399	86.0
Race		
White	385	83.0
Black/African American	21	4.5
Asian	25	5.4
Native American/Alaskan Native	1	0.2
Hawaiian/Pacific Islander	1	0.2
More than one race	17	3.7
Other	12	2.6
No answer	2	0.4
Ethnicity		
Hispanic	14	3.0
Non-Hispanic	447	96.4
No answer	3	0.6
Classification		
Freshman	40	8.6
Sophomore	46	9.9
Junior	84	18.1
Senior	95	20.5
Grad/professional	174	37.5
Not seeking a degree	12	2.6
Other	9	1.9
No answer	4	0.9

Table 14 (continued). Demographic characteristics of survey participants

	Frequency	%
Student status		
Full-time	338	72.8
Part-time	121	26.1
No answer	5	1.1
Approximate GPA		
A	220	47.4
B	210	45.3
C	32	6.9
D	1	0.2
F	1	0.2
Location of residence		
On-campus	16	3.4
Off-campus	442	95.3
No answer	6	1.3
Type of residence		
House/apartment/etc.	449	96.8
Residence hall	6	1.3
Other	7	1.5
No answer	2	0.4

FREQUENCY TABLES

Substance use during the last 12 months: Cigarettes

		Frequency	Percent	Valid Percent	Cumulative Percent
Valid	No	352	75.9	75.9	75.9
	Yes	112	24.1	24.1	100.0
	Total	464	100.0	100.0	

Substance use during the last 12 months: Cigars

		Frequency	Percent	Valid Percent	Cumulative Percent
Valid	No	388	83.6	83.6	83.6
	Yes	76	16.4	16.4	100.0
	Total	464	100.0	100.0	

Substance use during the last 12 months: Chewing or smokeless tobacco

		Frequency	Percent	Valid Percent	Cumulative Percent
Valid	No answer	3	.6	.6	.6
	No	437	94.2	94.2	94.8
	Yes	24	5.2	5.2	100.0
	Total	464	100.0	100.0	

Substance use during the last 12 months: Smoking tobacco with hookah or water pipe

		Frequency	Percent	Valid Percent	Cumulative Percent
Valid	No answer	2	.4	.4	.4
	No	362	78.0	78.0	78.4
	Yes	100	21.6	21.6	100.0
	Total	464	100.0	100.0	

Substance use during the last 12 months: Alcohol

		Frequency	Percent	Valid Percent	Cumulative Percent
Valid	No answer	1	.2	.2	.2
	No	116	25.0	25.0	25.2
	Yes	347	74.8	74.8	100.0
	Total	464	100.0	100.0	

Substance use during the last 12 months: Marijuana

		Frequency	Percent	Valid Percent	Cumulative Percent
Valid	No answer	1	.2	.2	.2
	No	388	83.6	83.6	83.8
	Yes	75	16.2	16.2	100.0
	Total	464	100.0	100.0	

Substance use during the last 12 months: Cocaine

		Frequency	Percent	Valid Percent	Cumulative Percent
Valid	No answer	2	.4	.4	.4
	No	445	95.9	95.9	96.3
	Yes	17	3.7	3.7	100.0
	Total	464	100.0	100.0	

Substance use during the last 12 months: Hallucinogens

		Frequency	Percent	Valid Percent	Cumulative Percent
Valid	No answer	2	.4	.4	.4
	No	445	95.9	95.9	96.3
	Yes	17	3.7	3.7	100.0
	Total	464	100.0	100.0	

Substance use during the last 12 months: Opiates

		Frequency	Percent	Valid Percent	Cumulative Percent
Valid	No answer	2	.4	.4	.4
	No	451	97.2	97.2	97.6
	Yes	11	2.4	2.4	100.0
	Total	464	100.0	100.0	

Substance use during the last 12 months: Designer drugs

		Frequency	Percent	Valid Percent	Cumulative Percent
Valid	No	450	97.0	97.0	97.0
	Yes	14	3.0	3.0	100.0
	Total	464	100.0	100.0	

Substance use during the last 12 months: Inhalants

		Frequency	Percent	Valid Percent	Cumulative Percent
Valid	No answer	2	.4	.4	.4
	No	453	97.6	97.6	98.1
	Yes	9	1.9	1.9	100.0
	Total	464	100.0	100.0	

Substance use during the last 12 months: Steroids

		Frequency	Percent	Valid Percent	Cumulative Percent
Valid	No answer	1	.2	.2	.2
	No	453	97.6	97.6	97.8
	Yes	10	2.2	2.2	100.0
	Total	464	100.0	100.0	

Substance use during the last 12 months: Other illegal drugs

		Frequency	Percent	Valid Percent	Cumulative Percent
Valid	No answer	2	.4	.4	.4
	No	449	96.8	96.8	97.2
	Yes	13	2.8	2.8	100.0
	Total	464	100.0	100.0	

Substance use during the last 12 months: Prescription pills that are not prescribed to you

		Frequency	Percent	Valid Percent	Cumulative Percent
Valid	No	411	88.6	88.6	88.6
	Yes	53	11.4	11.4	100.0
	Total	464	100.0	100.0	

Substance use during the last 12 months: Prescription medicines to get high

		Frequency	Percent	Valid Percent	Cumulative Percent
Valid	No	438	94.4	94.4	94.4
	Yes	26	5.6	5.6	100.0
	Total	464	100.0	100.0	

Substance use during the last 12 months: Over-the-counter medications to get high

		Frequency	Percent	Valid Percent	Cumulative Percent
Valid	No	455	98.1	98.1	98.1
	Yes	9	1.9	1.9	100.0
	Total	464	100.0	100.0	

Substance use during the last 12 months: Methamphetamine

		Frequency	Percent	Valid Percent	Cumulative Percent
Valid	No	456	98.3	98.3	98.3
	Yes	8	1.7	1.7	100.0
	Total	464	100.0	100.0	

Number of days in the past month substance was used: Cigarettes

		Frequency	Percent	Valid Percent	Cumulative Percent
Valid	No answer	162	34.9	34.9	34.9
	0 day	222	47.8	47.8	82.8
	1-2 days	21	4.5	4.5	87.3
	3-5 days	6	1.3	1.3	88.6
	6-9 days	6	1.3	1.3	89.9
	10-19 days	8	1.7	1.7	91.6
	20-29 days	9	1.9	1.9	93.5
	All 30 days	30	6.5	6.5	100.0
	Total	464	100.0	100.0	

Number of days in the past month substance was used: Cigars

		Frequency	Percent	Valid Percent	Cumulative Percent
Valid	No answer	164	35.3	35.3	35.3
	0 day	262	56.5	56.5	91.8
	1-2 days	28	6.0	6.0	97.8
	3-5 days	4	.9	.9	98.7
	6-9 days	2	.4	.4	99.1
	10-19 days	3	.6	.6	99.8
	All 30 days	1	.2	.2	100.0
	Total	464	100.0	100.0	

Number of days in the past month substance was used: Chewing or smokeless tobacco

		Frequency	Percent	Valid Percent	Cumulative Percent
Valid	No answer	178	38.4	38.4	38.4
	0 day	276	59.5	59.5	97.8
	1-2 days	4	.9	.9	98.7
	3-5 days	1	.2	.2	98.9
	10-19 days	2	.4	.4	99.4
	20-29 days	1	.2	.2	99.6
	All 30 days	2	.4	.4	100.0
	Total	464	100.0	100.0	

Number of days in the past month substance was used: Smoking tobacco with hooka or water pipe

		Frequency	Percent	Valid Percent	Cumulative Percent
Valid	No answer	169	36.4	36.4	36.4
	0 day	251	54.1	54.1	90.5
	1-2 days	27	5.8	5.8	96.3
	3-5 days	9	1.9	1.9	98.3
	6-9 days	4	.9	.9	99.1
	10-19 days	3	.6	.6	99.8
	20-29 days	1	.2	.2	100.0
	Total	464	100.0	100.0	

Number of days in the past month substance was used: Alcohol

		Frequency	Percent	Valid Percent	Cumulative Percent
Valid	No answer	57	12.3	12.3	12.3
	0 day	75	16.2	16.2	28.4
	1-2 days	112	24.1	24.1	52.6
	3-5 days	84	18.1	18.1	70.7
	6-9 days	67	14.4	14.4	85.1
	10-19 days	52	11.2	11.2	96.3
	20-29 days	17	3.7	3.7	100.0
	Total	464	100.0	100.0	

Number of days in the past month substance was used: Marijuana

		Frequency	Percent	Valid Percent	Cumulative Percent
Valid	No answer	169	36.4	36.4	36.4
	0 day	251	54.1	54.1	90.5
	1-2 days	11	2.4	2.4	92.9
	3-5 days	7	1.5	1.5	94.4
	6-9 days	7	1.5	1.5	95.9
	10-19 days	6	1.3	1.3	97.2
	20-29 days	6	1.3	1.3	98.5
	All 30 days	7	1.5	1.5	100.0
	Total	464	100.0	100.0	

Number of days in the past month substance was used: Cocaine

		Frequency	Percent	Valid Percent	Cumulative Percent
Valid	No answer	184	39.7	39.7	39.7
	0 day	277	59.7	59.7	99.4
	1-2 days	1	.2	.2	99.6
	3-5 days	2	.4	.4	100.0
	Total	464	100.0	100.0	

Number of days in the past month substance was used: Hallucinogens

		Frequency	Percent	Valid Percent	Cumulative Percent
Valid	No answer	182	39.2	39.2	39.2
	0 day	278	59.9	59.9	99.1
	1-2 days	2	.4	.4	99.6
	3-5 days	2	.4	.4	100.0
	Total	464	100.0	100.0	

Number of days in the past month substance was used: Opiates

		Frequency	Percent	Valid Percent	Cumulative Percent
Valid	No answer	182	39.2	39.2	39.2
	0 day	279	60.1	60.1	99.4
	3-5 days	3	.6	.6	100.0
	Total	464	100.0	100.0	

Number of days in the past month substance was used: Designer drugs

		Frequency	Percent	Valid Percent	Cumulative Percent
Valid	No answer	184	39.7	39.7	39.7
	0 day	279	60.1	60.1	99.8
	3-5 days	1	.2	.2	100.0
	Total	464	100.0	100.0	

Number of days in the past month substance was used: Inhalants

		Frequency	Percent	Valid Percent	Cumulative Percent
Valid	No answer	182	39.2	39.2	39.2
	0 day	282	60.8	60.8	100.0
	Total	464	100.0	100.0	

Number of days in the past month substance was used: Steroids

		Frequency	Percent	Valid Percent	Cumulative Percent
Valid	No answer	183	39.4	39.4	39.4
	0 day	280	60.3	60.3	99.8
	All 30 days	1	.2	.2	100.0
	Total	464	100.0	100.0	

Number of days in the past month substance was used: Other illegal drugs

		Frequency	Percent	Valid Percent	Cumulative Percent
Valid	No answer	183	39.4	39.4	39.4
	0 day	278	59.9	59.9	99.4
	1-2 days	2	.4	.4	99.8
	3-5 days	1	.2	.2	100.0
	Total	464	100.0	100.0	

Number of days in the past month substance was used: Prescription pills that are not prescribed to you

		Frequency	Percent	Valid Percent	Cumulative Percent
Valid	No answer	169	36.4	36.4	36.4
	0 day	264	56.9	56.9	93.3
	1-2 days	17	3.7	3.7	97.0
	3-5 days	10	2.2	2.2	99.1
	6-9 days	1	.2	.2	99.4
	10-19 days	1	.2	.2	99.6
	20-29 days	1	.2	.2	99.8
	All 30 days	1	.2	.2	100.0
	Total	464	100.0	100.0	

Number of days in the past month substance was used: Prescription medicines to get high

		Frequency	Percent	Valid Percent	Cumulative Percent
Valid	No answer	182	39.2	39.2	39.2
	0 day	274	59.1	59.1	98.3
	1-2 days	2	.4	.4	98.7
	3-5 days	5	1.1	1.1	99.8
	10-19 days	1	.2	.2	100.0
	Total	464	100.0	100.0	

Number of days in the past month substance was used: Over-the-counter medications to get high

		Frequency	Percent	Valid Percent	Cumulative Percent
Valid	No answer	183	39.4	39.4	39.4
	0 day	279	60.1	60.1	99.6
	1-2 days	1	.2	.2	99.8
	3-5 days	1	.2	.2	100.0
	Total	464	100.0	100.0	

Number of days in the past month substance was used: Methamphetamine

		Frequency	Percent	Valid Percent	Cumulative Percent
Valid	No answer	186	40.1	40.1	40.1
	0 day	278	59.9	59.9	100.0
	Total	464	100.0	100.0	

Use of substance in the past year without a prescription: Adderall

		Frequency	Percent	Valid Percent	Cumulative Percent
Valid	No answer	9	1.9	1.9	1.9
	Did not use	434	93.5	93.5	95.5
	Once per year	10	2.2	2.2	97.6
	6 times a year	6	1.3	1.3	98.9
	Once a month	3	.6	.6	99.6
	Once a week	1	.2	.2	99.8
	3 times a week	1	.2	.2	100.0
	Total	464	100.0	100.0	

Use of substance in the past year without a prescription: Ritalin

		Frequency	Percent	Valid Percent	Cumulative Percent
Valid	No answer	10	2.2	2.2	2.2
	Did not use	453	97.6	97.6	99.8
	6 times a year	1	.2	.2	100.0
	Total	464	100.0	100.0	

Use of substance in the past year without a prescription: Xanax

		Frequency	Percent	Valid Percent	Cumulative Percent
Valid	No answer	12	2.6	2.6	2.6
	Did not use	436	94.0	94.0	96.6
	Once per year	10	2.2	2.2	98.7
	6 times a year	5	1.1	1.1	99.8
	Once a month	1	.2	.2	100.0
	Total	464	100.0	100.0	

Use of substance in the past year without a prescription: Codeine

		Frequency	Percent	Valid Percent	Cumulative Percent
Valid	No answer	10	2.2	2.2	2.2
	Did not use	445	95.9	95.9	98.1
	Once per year	3	.6	.6	98.7
	6 times a year	4	.9	.9	99.6
	Once a month	1	.2	.2	99.8
	Once a week	1	.2	.2	100.0
	Total	464	100.0	100.0	

Use of substance in the past year without a prescription: Hydrocodone

		Frequency	Percent	Valid Percent	Cumulative Percent
Valid	No answer	8	1.7	1.7	1.7
	Did not use	436	94.0	94.0	95.7
	Once per year	7	1.5	1.5	97.2
	6 times a year	10	2.2	2.2	99.4
	Once a week	2	.4	.4	99.8
	3 times a week	1	.2	.2	100.0
	Total	464	100.0	100.0	

Use of substance in the past year without a prescription: Percocet

		Frequency	Percent	Valid Percent	Cumulative Percent
Valid	No answer	11	2.4	2.4	2.4
	Did not use	442	95.3	95.3	97.6
	Once per year	4	.9	.9	98.5
	6 times a year	3	.6	.6	99.1
	Once a month	1	.2	.2	99.4
	Once a week	2	.4	.4	99.8
	Every day	1	.2	.2	100.0
	Total	464	100.0	100.0	

Use of substance in the past year without a prescription: Oxycontin

		Frequency	Percent	Valid Percent	Cumulative Percent
Valid	No answer	14	3.0	3.0	3.0
	Did not use	445	95.9	95.9	98.9
	Once per year	2	.4	.4	99.4
	6 times a year	1	.2	.2	99.6
	Once a month	1	.2	.2	99.8
	Every day	1	.2	.2	100.0
	Total	464	100.0	100.0	

Use of substance in the past year without a prescription: Morphine

		Frequency	Percent	Valid Percent	Cumulative Percent
Valid	No answer	10	2.2	2.2	2.2
	Did not use	450	97.0	97.0	99.1
	Once per year	1	.2	.2	99.4
	6 times a year	1	.2	.2	99.6
	Once a month	1	.2	.2	99.8
	Every day	1	.2	.2	100.0
	Total	464	100.0	100.0	

Use of substance in the past year without a prescription: Methadone

		Frequency	Percent	Valid Percent	Cumulative Percent
Valid	No answer	12	2.6	2.6	2.6
	Did not use	448	96.6	96.6	99.1
	Once per year	1	.2	.2	99.4
	Once a month	2	.4	.4	99.8
	Once a week	1	.2	.2	100.0
	Total	464	100.0	100.0	

Age of first time use: Cigarettes

		Frequency	Percent	Valid Percent	Cumulative Percent
Valid	No answer	4	.9	.9	.9
	Did not use	209	45.0	45.0	45.9
	Under 10	6	1.3	1.3	47.2
	10-11	18	3.9	3.9	51.1
	12-13	35	7.5	7.5	58.6
	14-15	44	9.5	9.5	68.1
	16-17	58	12.5	12.5	80.6
	18-20	63	13.6	13.6	94.2
	21-25	24	5.2	5.2	99.4
	26+	3	.6	.6	100.0
	Total	464	100.0	100.0	

Age of first time use: Cigars

		Frequency	Percent	Valid Percent	Cumulative Percent
Valid	No answer	9	1.9	1.9	1.9
	Did not use	286	61.6	61.6	63.6
	Under 10	1	.2	.2	63.8
	10-11	3	.6	.6	64.4
	12-13	7	1.5	1.5	65.9
	14-15	18	3.9	3.9	69.8
	16-17	36	7.8	7.8	77.6
	18-20	67	14.4	14.4	92.0
	21-25	29	6.3	6.3	98.3
	26+	8	1.7	1.7	100.0
	Total	464	100.0	100.0	

Age of first time use: Chewing or smokeless tobacco

		Frequency	Percent	Valid Percent	Cumulative Percent
Valid	No answer	13	2.8	2.8	2.8
	Did not use	386	83.2	83.2	86.0
	10-11	1	.2	.2	86.2
	12-13	9	1.9	1.9	88.1
	14-15	8	1.7	1.7	89.9
	16-17	15	3.2	3.2	93.1
	18-20	21	4.5	4.5	97.6
	21-25	8	1.7	1.7	99.4
	26+	3	.6	.6	100.0
	Total	464	100.0	100.0	

Age of first time use: Smoking tobacco with hooka or water pipe

		Frequency	Percent	Valid Percent	Cumulative Percent
Valid	No answer	15	3.2	3.2	3.2
	Did not use	320	69.0	69.0	72.2
	12-13	2	.4	.4	72.6
	14-15	4	.9	.9	73.5
	16-17	16	3.4	3.4	76.9
	18-20	72	15.5	15.5	92.5
	21-25	26	5.6	5.6	98.1
	26+	9	1.9	1.9	100.0
	Total	464	100.0	100.0	

Age of first time use: Alcohol

		Frequency	Percent	Valid Percent	Cumulative Percent
Valid	No answer	2	.4	.4	.4
	Did not use	48	10.3	10.3	10.8
	Under 10	9	1.9	1.9	12.7
	10-11	9	1.9	1.9	14.7
	12-13	30	6.5	6.5	21.1
	14-15	75	16.2	16.2	37.3
	16-17	89	19.2	19.2	56.5
	18-20	135	29.1	29.1	85.6
	21-25	63	13.6	13.6	99.1
	26+	4	.9	.9	100.0
	Total	464	100.0	100.0	

Age of first time use: Marijuana

		Frequency	Percent	Valid Percent	Cumulative Percent
Valid	No answer	10	2.2	2.2	2.2
	Did not use	248	53.4	53.4	55.6
	10-11	2	.4	.4	56.0
	12-13	15	3.2	3.2	59.3
	14-15	43	9.3	9.3	68.5
	16-17	59	12.7	12.7	81.3
	18-20	67	14.4	14.4	95.7
	21-25	19	4.1	4.1	99.8
	26+	1	.2	.2	100.0
	Total	464	100.0	100.0	

Age of first time use: Cocaine

		Frequency	Percent	Valid Percent	Cumulative Percent
Valid	No answer	11	2.4	2.4	2.4
	Did not use	410	88.4	88.4	90.7
	14-15	1	.2	.2	90.9
	16-17	12	2.6	2.6	93.5
	18-20	18	3.9	3.9	97.4
	21-25	11	2.4	2.4	99.8
	26+	1	.2	.2	100.0
	Total	464	100.0	100.0	

Age of first time use: Hallucinogens

		Frequency	Percent	Valid Percent	Cumulative Percent
Valid	No answer	13	2.8	2.8	2.8
	Did not use	401	86.4	86.4	89.2
	12-13	1	.2	.2	89.4
	14-15	5	1.1	1.1	90.5
	16-17	17	3.7	3.7	94.2
	18-20	24	5.2	5.2	99.4
	21-25	3	.6	.6	100.0
	Total	464	100.0	100.0	

Age of first time use: Opiates

		Frequency	Percent	Valid Percent	Cumulative Percent
Valid	No answer	18	3.9	3.9	3.9
	Did not use	430	92.7	92.7	96.6
	14-15	2	.4	.4	97.0
	16-17	6	1.3	1.3	98.3
	18-20	6	1.3	1.3	99.6
	21-25	2	.4	.4	100.0
	Total	464	100.0	100.0	

Age of first time use: Designer drugs

		Frequency	Percent	Valid Percent	Cumulative Percent
Valid	No answer	15	3.2	3.2	3.2
	Did not use	413	89.0	89.0	92.2
	14-15	1	.2	.2	92.5
	16-17	9	1.9	1.9	94.4
	18-20	17	3.7	3.7	98.1
	21-25	8	1.7	1.7	99.8
	26+	1	.2	.2	100.0
	Total	464	100.0	100.0	

Age of first time use: Inhalants

		Frequency	Percent	Valid Percent	Cumulative Percent
Valid	No answer	17	3.7	3.7	3.7
	Did not use	421	90.7	90.7	94.4
	10-11	1	.2	.2	94.6
	12-13	5	1.1	1.1	95.7
	14-15	6	1.3	1.3	97.0
	16-17	9	1.9	1.9	98.9
	18-20	3	.6	.6	99.6
	21-25	1	.2	.2	99.8
	26+	1	.2	.2	100.0
	Total	464	100.0	100.0	

Age of first time use: Steroids

		Frequency	Percent	Valid Percent	Cumulative Percent
Valid	No answer	16	3.4	3.4	3.4
	Did not use	444	95.7	95.7	99.1
	18-20	2	.4	.4	99.6
	21-25	1	.2	.2	99.8
	26+	1	.2	.2	100.0
	Total	464	100.0	100.0	

Age of first time use: Other illegal drugs

		Frequency	Percent	Valid Percent	Cumulative Percent
Valid	No answer	15	3.2	3.2	3.2
	Did not use	425	91.6	91.6	94.8
	14-15	3	.6	.6	95.5
	16-17	9	1.9	1.9	97.4
	18-20	10	2.2	2.2	99.6
	21-25	2	.4	.4	100.0
	Total	464	100.0	100.0	

Age of first time use: Prescription pills not prescribed to you

		Frequency	Percent	Valid Percent	Cumulative Percent
Valid	No answer	11	2.4	2.4	2.4
	Did not use	365	78.7	78.7	81.0
	Under 10	1	.2	.2	81.3
	10-11	1	.2	.2	81.5
	12-13	2	.4	.4	81.9
	14-15	15	3.2	3.2	85.1
	16-17	26	5.6	5.6	90.7
	18-20	22	4.7	4.7	95.5
	21-25	14	3.0	3.0	98.5
	26+	7	1.5	1.5	100.0
	Total	464	100.0	100.0	

Age of first time use: Prescription medicines to get high

		Frequency	Percent	Valid Percent	Cumulative Percent
Valid	No answer	15	3.2	3.2	3.2
	Did not use	403	86.9	86.9	90.1
	Under 10	1	.2	.2	90.3
	12-13	1	.2	.2	90.5
	14-15	9	1.9	1.9	92.5
	16-17	15	3.2	3.2	95.7
	18-20	13	2.8	2.8	98.5
	21-25	6	1.3	1.3	99.8
	26+	1	.2	.2	100.0
	Total	464	100.0	100.0	

Age of first time use: Over-the-counter medications to get high

		Frequency	Percent	Valid Percent	Cumulative Percent
Valid	No answer	16	3.4	3.4	3.4
	Did not use	424	91.4	91.4	94.8
	10-11	1	.2	.2	95.0
	12-13	1	.2	.2	95.3
	14-15	5	1.1	1.1	96.3
	16-17	7	1.5	1.5	97.8
	18-20	8	1.7	1.7	99.6
	26+	2	.4	.4	100.0
	Total	464	100.0	100.0	

Age of first time use: Methamphetamine

		Frequency	Percent	Valid Percent	Cumulative Percent
Valid	No answer	21	4.5	4.5	4.5
	Did not use	430	92.7	92.7	97.2
	10-11	1	.2	.2	97.4
	14-15	1	.2	.2	97.6
	16-17	3	.6	.6	98.3
	18-20	5	1.1	1.1	99.4
	21-25	3	.6	.6	100.0
	Total	464	100.0	100.0	

Alcohol use in the past 6 months

		Frequency	Percent	Valid Percent	Cumulative Percent
Valid	Yes	379	81.7	81.7	81.7
	No	85	18.3	18.3	100.0
	Total	464	100.0	100.0	

Consequences of alcohol use: Spouse, partner or parents worried or complained about your drinking

		Frequency	Percent	Valid Percent	Cumulative Percent
Valid	No answer	85	18.3	18.3	18.3
	Never	342	73.7	73.7	92.0
	Once	19	4.1	4.1	96.1
	Twice	5	1.1	1.1	97.2
	3-5 times	9	1.9	1.9	99.1
	6-9 times	2	.4	.4	99.6
	10+ times	2	.4	.4	100.0
	Total	464	100.0	100.0	

Consequences of alcohol use: Felt bad about your drinking

		Frequency	Percent	Valid Percent	Cumulative Percent
Valid	No answer	86	18.5	18.5	18.5
	Never	305	65.7	65.7	84.3
	Once	37	8.0	8.0	92.2
	Twice	10	2.2	2.2	94.4
	3-5 times	18	3.9	3.9	98.3
	6-9 times	3	.6	.6	98.9
	10+ times	5	1.1	1.1	100.0
	Total	464	100.0	100.0	

Consequences of alcohol use: Been unable to stop drinking when you wanted to

		Frequency	Percent	Valid Percent	Cumulative Percent
Valid	No answer	87	18.8	18.8	18.8
	Never	348	75.0	75.0	93.8
	Once	4	.9	.9	94.6
	Twice	10	2.2	2.2	96.8
	3-5 times	3	.6	.6	97.4
	6-9 times	2	.4	.4	97.8
	10+ times	10	2.2	2.2	100.0
	Total	464	100.0	100.0	

Consequences of alcohol use: Attended Alcoholics Anonymous

		Frequency	Percent	Valid Percent	Cumulative Percent
Valid	No answer	86	18.5	18.5	18.5
	Never	377	81.3	81.3	99.8
	3-5 times	1	.2	.2	100.0
	Total	464	100.0	100.0	

Consequences of alcohol use: Created problems between you and your spouse or partner

		Frequency	Percent	Valid Percent	Cumulative Percent
Valid	No answer	85	18.3	18.3	18.3
	Never	347	74.8	74.8	93.1
	Once	12	2.6	2.6	95.7
	Twice	10	2.2	2.2	97.8
	3-5 times	6	1.3	1.3	99.1
	6-9 times	2	.4	.4	99.6
	10+ times	2	.4	.4	100.0
	Total	464	100.0	100.0	

**Consequences of alcohol use: Gotten into trouble at work or school
because of drinking**

		Frequency	Percent	Valid Percent	Cumulative Percent
Valid	No answer	86	18.5	18.5	18.5
	Never	368	79.3	79.3	97.8
	Once	6	1.3	1.3	99.1
	Twice	2	.4	.4	99.6
	3-5 times	1	.2	.2	99.8
	10+ times	1	.2	.2	100.0
	Total	464	100.0	100.0	

**Consequences of alcohol use: Neglected your obligations, family, or work
due to drinking**

		Frequency	Percent	Valid Percent	Cumulative Percent
Valid	No answer	87	18.8	18.8	18.8
	Never	367	79.1	79.1	97.8
	Once	5	1.1	1.1	98.9
	3-5 times	3	.6	.6	99.6
	6-9 times	1	.2	.2	99.8
	10+ times	1	.2	.2	100.0
	Total	464	100.0	100.0	

**Consequences of alcohol use: Gone to anyone for help to reduce your
drinking**

		Frequency	Percent	Valid Percent	Cumulative Percent
Valid	No answer	86	18.5	18.5	18.5
	Never	371	80.0	80.0	98.5
	Once	2	.4	.4	98.9
	Twice	2	.4	.4	99.4
	3-5 times	1	.2	.2	99.6
	10+ times	2	.4	.4	100.0
	Total	464	100.0	100.0	

Consequences of alcohol use: Been in the hospital because of drinking

		Frequency	Percent	Valid Percent	Cumulative Percent
Valid	No answer	85	18.3	18.3	18.3
	Never	376	81.0	81.0	99.4
	Once	2	.4	.4	99.8
	10+ times	1	.2	.2	100.0
	Total	464	100.0	100.0	

Consequences of alcohol use: Been arrested even for a few hours because of drinking

		Frequency	Percent	Valid Percent	Cumulative Percent
Valid	No answer	87	18.8	18.8	18.8
	Never	370	79.7	79.7	98.5
	Once	6	1.3	1.3	99.8
	3-5 times	1	.2	.2	100.0
	Total	464	100.0	100.0	

Consequences of alcohol use: Been arrested for drunk driving or driving after drinking

		Frequency	Percent	Valid Percent	Cumulative Percent
Valid	No answer	85	18.3	18.3	18.3
	Never	376	81.0	81.0	99.4
	Once	2	.4	.4	99.8
	3-5 times	1	.2	.2	100.0
	Total	464	100.0	100.0	

Consequences of alcohol use: Driven a car while under the influence

		Frequency	Percent	Valid Percent	Cumulative Percent
Valid	No answer	85	18.3	18.3	18.3
	Never	290	62.5	62.5	80.8
	Once	40	8.6	8.6	89.4
	Twice	22	4.7	4.7	94.2
	3-5 times	16	3.4	3.4	97.6
	6-9 times	4	.9	.9	98.5
	10+ times	7	1.5	1.5	100.0
	Total	464	100.0	100.0	

Consequences of alcohol use: Gotten into physical fights when drinking

		Frequency	Percent	Valid Percent	Cumulative Percent
Valid	No answer	89	19.2	19.2	19.2
	Never	360	77.6	77.6	96.8
	Once	9	1.9	1.9	98.7
	Twice	3	.6	.6	99.4
	3-5 times	2	.4	.4	99.8
	6-9 times	1	.2	.2	100.0
	Total	464	100.0	100.0	

Consequences of alcohol use: Experienced unwanted sexual attention

		Frequency	Percent	Valid Percent	Cumulative Percent
Valid	No answer	89	19.2	19.2	19.2
	Never	359	77.4	77.4	96.6
	Once	8	1.7	1.7	98.3
	Twice	3	.6	.6	98.9
	3-5 times	3	.6	.6	99.6
	10+ times	2	.4	.4	100.0
	Total	464	100.0	100.0	

Consequences of alcohol use: Engaged in risky sexual behavior

		Frequency	Percent	Valid Percent	Cumulative Percent
Valid	No answer	86	18.5	18.5	18.5
	Never	336	72.4	72.4	90.9
	Once	16	3.4	3.4	94.4
	Twice	14	3.0	3.0	97.4
	3-5 times	5	1.1	1.1	98.5
	6-9 times	4	.9	.9	99.4
	10+ times	3	.6	.6	100.0
	Total	464	100.0	100.0	

Consequences of alcohol use: Missed class or assignments

		Frequency	Percent	Valid Percent	Cumulative Percent
Valid	No answer	87	18.8	18.8	18.8
	Never	341	73.5	73.5	92.2
	Once	20	4.3	4.3	96.6
	Twice	6	1.3	1.3	97.8
	3-5 times	7	1.5	1.5	99.4
	6-9 times	2	.4	.4	99.8
	10+ times	1	.2	.2	100.0
	Total	464	100.0	100.0	

Consequences of alcohol use: Blacked out

		Frequency	Percent	Valid Percent	Cumulative Percent
Valid	No answer	88	19.0	19.0	19.0
	Never	316	68.1	68.1	87.1
	Once	20	4.3	4.3	91.4
	Twice	19	4.1	4.1	95.5
	3-5 times	15	3.2	3.2	98.7
	6-9 times	2	.4	.4	99.1
	10+ times	4	.9	.9	100.0
	Total	464	100.0	100.0	

Any drug use in the past year

		Frequency	Percent	Valid Percent	Cumulative Percent
Valid	Yes	132	28.4	28.4	28.4
	No	332	71.6	71.6	100.0
	Total	464	100.0	100.0	

Consequences of drug use: Abused more than one drug at a time

		Frequency	Percent	Valid Percent	Cumulative Percent
Valid	No answer	332	71.6	71.6	71.6
	Never	101	21.8	21.8	93.3
	Once	5	1.1	1.1	94.4
	Twice	6	1.3	1.3	95.7
	3-5 times	9	1.9	1.9	97.6
	6-9 times	1	.2	.2	97.8
	10+ times	10	2.2	2.2	100.0
	Total	464	100.0	100.0	

Consequences of drug use: Been unable to stop using drugs when you wanted to

		Frequency	Percent	Valid Percent	Cumulative Percent
Valid	No answer	334	72.0	72.0	72.0
	Never	117	25.2	25.2	97.2
	Once	3	.6	.6	97.8
	Twice	1	.2	.2	98.1
	3-5 times	2	.4	.4	98.5
	10+ times	7	1.5	1.5	100.0
	Total	464	100.0	100.0	

Consequences of drug use: Had blackouts or flashbacks as a result of drug use

		Frequency	Percent	Valid Percent	Cumulative Percent
Valid	No answer	333	71.8	71.8	71.8
	Never	122	26.3	26.3	98.1
	Once	5	1.1	1.1	99.1
	Twice	2	.4	.4	99.6
	3-5 times	2	.4	.4	100.0
	Total	464	100.0	100.0	

Consequences of drug use: Felt bad or guilty about your drug use

		Frequency	Percent	Valid Percent	Cumulative Percent
Valid	No answer	332	71.6	71.6	71.6
	Never	101	21.8	21.8	93.3
	Once	14	3.0	3.0	96.3
	Twice	6	1.3	1.3	97.6
	3-5 times	3	.6	.6	98.3
	6-9 times	1	.2	.2	98.5
	10+ times	7	1.5	1.5	100.0
	Total	464	100.0	100.0	

Consequences of drug use: Had your spouse or partner complain about your involvement with drugs

		Frequency	Percent	Valid Percent	Cumulative Percent
Valid	No answer	332	71.6	71.6	71.6
	Never	122	26.3	26.3	97.8
	Once	5	1.1	1.1	98.9
	Twice	1	.2	.2	99.1
	3-5 times	2	.4	.4	99.6
	10+ times	2	.4	.4	100.0
	Total	464	100.0	100.0	

Consequences of drug use: Neglected your family because of your use of drugs

		Frequency	Percent	Valid Percent	Cumulative Percent
Valid	No answer	332	71.6	71.6	71.6
	Never	124	26.7	26.7	98.3
	Once	1	.2	.2	98.5
	Twice	2	.4	.4	98.9
	3-5 times	1	.2	.2	99.1
	10+ times	4	.9	.9	100.0
	Total	464	100.0	100.0	

Consequences of drug use: Engaged in illegal activities in order to obtain drugs

		Frequency	Percent	Valid Percent	Cumulative Percent
Valid	No answer	332	71.6	71.6	71.6
	Never	124	26.7	26.7	98.3
	Twice	1	.2	.2	98.5
	3-5 times	1	.2	.2	98.7
	6-9 times	1	.2	.2	98.9
	10+ times	5	1.1	1.1	100.0
	Total	464	100.0	100.0	

Consequences of drug use: Gotten into physical fights because you were using drugs

		Frequency	Percent	Valid Percent	Cumulative Percent
Valid	No answer	333	71.8	71.8	71.8
	Never	129	27.8	27.8	99.6
	Once	1	.2	.2	99.8
	3-5 times	1	.2	.2	100.0
	Total	464	100.0	100.0	

Consequences of drug use: Experienced withdrawal symptoms when you stopped taking drugs

		Frequency	Percent	Valid Percent	Cumulative Percent
Valid	No answer	332	71.6	71.6	71.6
	Never	121	26.1	26.1	97.6
	Once	1	.2	.2	97.8
	Twice	1	.2	.2	98.1
	3-5 times	8	1.7	1.7	99.8
	6-9 times	1	.2	.2	100.0
	Total	464	100.0	100.0	

Consequences of drug use: Had medical problems as a result of your drug use

		Frequency	Percent	Valid Percent	Cumulative Percent
Valid	No answer	332	71.6	71.6	71.6
	Never	125	26.9	26.9	98.5
	Once	3	.6	.6	99.1
	Twice	2	.4	.4	99.6
	6-9 times	1	.2	.2	99.8
	10+ times	1	.2	.2	100.0
	Total	464	100.0	100.0	

Consequences of drug use: Driven a car while under the influence of drugs

		Frequency	Percent	Valid Percent	Cumulative Percent
Valid	No answer	333	71.8	71.8	71.8
	Never	90	19.4	19.4	91.2
	Once	9	1.9	1.9	93.1
	Twice	7	1.5	1.5	94.6
	3-5 times	8	1.7	1.7	96.3
	6-9 times	1	.2	.2	96.6
	10+ times	16	3.4	3.4	100.0
	Total	464	100.0	100.0	

Consequences of drug use: Gotten in trouble at work because of drug use

		Frequency	Percent	Valid Percent	Cumulative Percent
Valid	No answer	332	71.6	71.6	71.6
	Never	129	27.8	27.8	99.4
	Once	3	.6	.6	100.0
	Total	464	100.0	100.0	

Consequences of drug use: Been in very vulnerable situations

		Frequency	Percent	Valid Percent	Cumulative Percent
Valid	No answer	332	71.6	71.6	71.6
	Never	126	27.2	27.2	98.7
	Once	2	.4	.4	99.1
	Twice	1	.2	.2	99.4
	3-5 times	1	.2	.2	99.6
	6-9 times	2	.4	.4	100.0
	Total	464	100.0	100.0	

Consequences of drug use: Engaged in risky sexual behavior

		Frequency	Percent	Valid Percent	Cumulative Percent
Valid	No answer	332	71.6	71.6	71.6
	Never	122	26.3	26.3	97.8
	Once	4	.9	.9	98.7
	Twice	4	.9	.9	99.6
	3-5 times	1	.2	.2	99.8
	10+ times	1	.2	.2	100.0
	Total	464	100.0	100.0	

Consequences of drug use: Failed a class because of drug use

		Frequency	Percent	Valid Percent	Cumulative Percent
Valid	No answer	332	71.6	71.6	71.6
	Never	129	27.8	27.8	99.4
	Once	2	.4	.4	99.8
	Twice	1	.2	.2	100.0
	Total	464	100.0	100.0	

Consequences of drug use: Missed class or assignments due to drug use

		Frequency	Percent	Valid Percent	Cumulative Percent
Valid	No answer	332	71.6	71.6	71.6
	Never	118	25.4	25.4	97.0
	Once	6	1.3	1.3	98.3
	Twice	2	.4	.4	98.7
	3-5 times	2	.4	.4	99.1
	6-9 times	2	.4	.4	99.6
	10+ times	2	.4	.4	100.0
	Total	464	100.0	100.0	

Perception of peer approval/disapproval: Trying marijuana once or twice

		Frequency	Percent	Valid Percent	Cumulative Percent
Valid	No answer	8	1.7	1.7	1.7
	Strongly approve	74	15.9	15.9	17.7
	Somewhat approve	198	42.7	42.7	60.3
	Neither approve or disapprove	122	26.3	26.3	86.6
	Somewhat disapprove	29	6.3	6.3	92.9
	Strongly disapprove	33	7.1	7.1	100.0
	Total	464	100.0	100.0	

Perception of peer approval/disapproval: Smoking marijuana occasionally

		Frequency	Percent	Valid Percent	Cumulative Percent
Valid	No answer	9	1.9	1.9	1.9
	Strongly approve	32	6.9	6.9	8.8
	Somewhat approve	164	35.3	35.3	44.2
	Neither approve or disapprove	144	31.0	31.0	75.2
	Somewhat disapprove	74	15.9	15.9	91.2
	Strongly disapprove	41	8.8	8.8	100.0
	Total	464	100.0	100.0	

Perception of peer approval/disapproval: Smoking marijuana regularly

		Frequency	Percent	Valid Percent	Cumulative Percent
Valid	No answer	9	1.9	1.9	1.9
	Strongly approve	16	3.4	3.4	5.4
	Somewhat approve	81	17.5	17.5	22.8
	Neither approve or disapprove	110	23.7	23.7	46.6
	Somewhat disapprove	162	34.9	34.9	81.5
	Strongly disapprove	86	18.5	18.5	100.0
	Total	464	100.0	100.0	

Perception of peer approval/disapproval: Trying cocaine once or twice

		Frequency	Percent	Valid Percent	Cumulative Percent
Valid	No answer	8	1.7	1.7	1.7
	Strongly approve	5	1.1	1.1	2.8
	Somewhat approve	34	7.3	7.3	10.1
	Neither approve or disapprove	75	16.2	16.2	26.3
	Somewhat disapprove	177	38.1	38.1	64.4
	Strongly disapprove	165	35.6	35.6	100.0
	Total	464	100.0	100.0	

Perception of peer approval/disapproval: Taking cocaine regularly

		Frequency	Percent	Valid Percent	Cumulative Percent
Valid	No answer	9	1.9	1.9	1.9
	Strongly approve	3	.6	.6	2.6
	Somewhat approve	4	.9	.9	3.4
	Neither approve or disapprove	41	8.8	8.8	12.3
	Somewhat disapprove	82	17.7	17.7	30.0
	Strongly disapprove	325	70.0	70.0	100.0
	Total	464	100.0	100.0	

Perception of peer approval/disapproval: Trying LSD once or twice

		Frequency	Percent	Valid Percent	Cumulative Percent
Valid	No answer	9	1.9	1.9	1.9
	Strongly approve	3	.6	.6	2.6
	Somewhat approve	37	8.0	8.0	10.6
	Neither approve or disapprove	79	17.0	17.0	27.6
	Somewhat disapprove	162	34.9	34.9	62.5
	Strongly disapprove	174	37.5	37.5	100.0
	Total	464	100.0	100.0	

Perception of peer approval/disapproval: Taking LSD regularly

		Frequency	Percent	Valid Percent	Cumulative Percent
Valid	No answer	10	2.2	2.2	2.2
	Strongly approve	3	.6	.6	2.8
	Somewhat approve	3	.6	.6	3.4
	Neither approve or disapprove	47	10.1	10.1	13.6
	Somewhat disapprove	85	18.3	18.3	31.9
	Strongly disapprove	316	68.1	68.1	100.0
	Total	464	100.0	100.0	

Perception of peer approval/disapproval: Trying amphetamine once or twice

		Frequency	Percent	Valid Percent	Cumulative Percent
Valid	No answer	8	1.7	1.7	1.7
	Strongly approve	6	1.3	1.3	3.0
	Somewhat approve	34	7.3	7.3	10.3
	Neither approve or disapprove	78	16.8	16.8	27.2
	Somewhat disapprove	140	30.2	30.2	57.3
	Strongly disapprove	198	42.7	42.7	100.0
	Total	464	100.0	100.0	

Perception of peer approval/disapproval: Taking amphetamine regularly

		Frequency	Percent	Valid Percent	Cumulative Percent
Valid	No answer	12	2.6	2.6	2.6
	Strongly approve	2	.4	.4	3.0
	Somewhat approve	10	2.2	2.2	5.2
	Neither approve or disapprove	45	9.7	9.7	14.9
	Somewhat disapprove	90	19.4	19.4	34.3
	Strongly disapprove	305	65.7	65.7	100.0
	Total	464	100.0	100.0	

Perception of peer approval/disapproval: Taking one or two drinks of an alcoholic beverage nearly every day

		Frequency	Percent	Valid Percent	Cumulative Percent
Valid	No answer	7	1.5	1.5	1.5
	Strongly approve	59	12.7	12.7	14.2
	Somewhat approve	133	28.7	28.7	42.9
	Neither approve or disapprove	127	27.4	27.4	70.3
	Somewhat disapprove	99	21.3	21.3	91.6
	Strongly disapprove	39	8.4	8.4	100.0
	Total	464	100.0	100.0	

Perception of peer approval/disapproval: Taking three or four drinks nearly every day

		Frequency	Percent	Valid Percent	Cumulative Percent
Valid	No answer	8	1.7	1.7	1.7
	Strongly approve	24	5.2	5.2	6.9
	Somewhat approve	59	12.7	12.7	19.6
	Neither approve or disapprove	103	22.2	22.2	41.8
	Somewhat disapprove	130	28.0	28.0	69.8
	Strongly disapprove	140	30.2	30.2	100.0
	Total	464	100.0	100.0	

Perception of peer approval/disapproval: Having five or more drinks in one sitting

		Frequency	Percent	Valid Percent	Cumulative Percent
Valid	No answer	9	1.9	1.9	1.9
	Strongly approve	35	7.5	7.5	9.5
	Somewhat approve	68	14.7	14.7	24.1
	Neither approve or disapprove	127	27.4	27.4	51.5
	Somewhat disapprove	111	23.9	23.9	75.4
	Strongly disapprove	114	24.6	24.6	100.0
	Total	464	100.0	100.0	

Perception of peer approval/disapproval: Taking steroids for body building or improved athletic performance

		Frequency	Percent	Valid Percent	Cumulative Percent
Valid	No answer	12	2.6	2.6	2.6
	Strongly approve	6	1.3	1.3	3.9
	Somewhat approve	23	5.0	5.0	8.8
	Neither approve or disapprove	98	21.1	21.1	30.0
	Somewhat disapprove	149	32.1	32.1	62.1
	Strongly disapprove	176	37.9	37.9	100.0
	Total	464	100.0	100.0	

Age

		Frequency	Percent	Valid Percent	Cumulative Percent
Valid	21 or older	399	86.0	86.0	86.0
	Under 21	65	14.0	14.0	100.0
	Total	464	100.0	100.0	

Students under 21: 1st easiest way to get alcohol

		Frequency	Percent	Valid Percent	Cumulative Percent
Valid	No answer	413	89.0	89.0	89.0
	Older friends	28	6.0	6.0	95.0
	Older siblings	2	.4	.4	95.5
	On-campus parties	3	.6	.6	96.1
	Fraternity or sorority houses	3	.6	.6	96.8
	Off-campus private parties	8	1.7	1.7	98.5
	Buying it yourself	1	.2	.2	98.7
	Stealing it from store	1	.2	.2	98.9
	From parents without their knowledge	1	.2	.2	99.1
	From parents with their knowledge	4	.9	.9	100.0
	Total	464	100.0	100.0	

Students under 21: 2nd easiest way to get alcohol

		Frequency	Percent	Valid Percent	Cumulative Percent
Valid	No answer	414	89.2	89.2	89.2
	Older friends	16	3.4	3.4	92.7
	Older siblings	6	1.3	1.3	94.0
	On-campus parties	1	.2	.2	94.2
	Fraternity or sorority houses	3	.6	.6	94.8
	Off-campus private parties	19	4.1	4.1	98.9
	Someone else on campus	2	.4	.4	99.4
	From parents without their knowledge	2	.4	.4	99.8
	From parents with their knowledge	1	.2	.2	100.0
	Total	464	100.0	100.0	

Students under 21: 3rd easiest way to get alcohol

		Frequency	Percent	Valid Percent	Cumulative Percent
Valid	No answer	416	89.7	89.7	89.7
	Older friends	3	.6	.6	90.3
	Older siblings	6	1.3	1.3	91.6
	On-campus parties	4	.9	.9	92.5
	Fraternity or sorority houses	4	.9	.9	93.3
	Off-campus private parties	14	3.0	3.0	96.3
	Someone else on campus	5	1.1	1.1	97.4
	Buying it yourself	3	.6	.6	98.1
	From parents without their knowledge	3	.6	.6	98.7
	From parents with their knowledge	6	1.3	1.3	100.0
	Total	464	100.0	100.0	

Students under 21: Bought alcohol

		Frequency	Percent	Valid Percent	Cumulative Percent
Valid	No answer	399	86.0	86.0	86.0
	Yes	9	1.9	1.9	87.9
	No	56	12.1	12.1	100.0
	Total	464	100.0	100.0	

Students under 21: Most common method to purchase alcohol

		Frequency	Percent	Valid Percent	Cumulative Percent
Valid	No answer	455	98.1	98.1	98.1
	Used a fake ID	1	.2	.2	98.3
	Used someone else's ID	2	.4	.4	98.7
	Bought alcohol without using an ID	6	1.3	1.3	100.0
	Total	464	100.0	100.0	

Students under 21: Easiest place to purchase alcohol

		Frequency	Percent	Valid Percent	Cumulative Percent
Valid	No answer	456	98.3	98.3	98.3
	Bar	3	.6	.6	98.9
	Restaurant	2	.4	.4	99.4
	Convenience store	1	.2	.2	99.6
	Liquor store	2	.4	.4	100.0
	Total	464	100.0	100.0	

Reasons for drinking: To experiment

		Frequency	Percent	Valid Percent	Cumulative Percent
Valid	No answer	6	1.3	1.3	1.3
	Yes	55	11.9	11.9	13.1
	No	398	85.8	85.8	98.9
	Unsure	5	1.1	1.1	100.0
	Total	464	100.0	100.0	

Reasons for drinking: Because I am hooked

		Frequency	Percent	Valid Percent	Cumulative Percent
Valid	No answer	9	1.9	1.9	1.9
	Yes	3	.6	.6	2.6
	No	448	96.6	96.6	99.1
	Unsure	4	.9	.9	100.0
	Total	464	100.0	100.0	

Reasons for drinking: To relax or relieve tension

		Frequency	Percent	Valid Percent	Cumulative Percent
Valid	No answer	5	1.1	1.1	1.1
	Yes	257	55.4	55.4	56.5
	No	199	42.9	42.9	99.4
	Unsure	3	.6	.6	100.0
	Total	464	100.0	100.0	

Reasons for drinking: To feel good or get high

		Frequency	Percent	Valid Percent	Cumulative Percent
Valid	No answer	7	1.5	1.5	1.5
	Yes	146	31.5	31.5	33.0
	No	308	66.4	66.4	99.4
	Unsure	3	.6	.6	100.0
	Total	464	100.0	100.0	

Reasons for drinking: To seek deeper insights and understanding

		Frequency	Percent	Valid Percent	Cumulative Percent
Valid	No answer	6	1.3	1.3	1.3
	Yes	17	3.7	3.7	5.0
	No	436	94.0	94.0	98.9
	Unsure	5	1.1	1.1	100.0
	Total	464	100.0	100.0	

Reasons for drinking: To have a good time with friends

		Frequency	Percent	Valid Percent	Cumulative Percent
Valid	No answer	5	1.1	1.1	1.1
	Yes	305	65.7	65.7	66.8
	No	150	32.3	32.3	99.1
	Unsure	4	.9	.9	100.0
	Total	464	100.0	100.0	

Reasons for drinking: To fit in with a group I like

		Frequency	Percent	Valid Percent	Cumulative Percent
Valid	No answer	7	1.5	1.5	1.5
	Yes	38	8.2	8.2	9.7
	No	415	89.4	89.4	99.1
	Unsure	4	.9	.9	100.0
	Total	464	100.0	100.0	

Reasons for drinking: Because of boredom

		Frequency	Percent	Valid Percent	Cumulative Percent
Valid	No answer	6	1.3	1.3	1.3
	Yes	46	9.9	9.9	11.2
	No	408	87.9	87.9	99.1
	Unsure	4	.9	.9	100.0
	Total	464	100.0	100.0	

Reasons for drinking: Because of anger or frustration

		Frequency	Percent	Valid Percent	Cumulative Percent
Valid	No answer	7	1.5	1.5	1.5
	Yes	55	11.9	11.9	13.4
	No	401	86.4	86.4	99.8
	Unsure	1	.2	.2	100.0
	Total	464	100.0	100.0	

Reasons for drinking: To get through the day

		Frequency	Percent	Valid Percent	Cumulative Percent
Valid	No answer	7	1.5	1.5	1.5
	Yes	15	3.2	3.2	4.7
	No	440	94.8	94.8	99.6
	Unsure	2	.4	.4	100.0
	Total	464	100.0	100.0	

Reasons for drinking: To cope with anxiety about social situations

		Frequency	Percent	Valid Percent	Cumulative Percent
Valid	No answer	6	1.3	1.3	1.3
	Yes	62	13.4	13.4	14.7
	No	394	84.9	84.9	99.6
	Unsure	2	.4	.4	100.0
	Total	464	100.0	100.0	

Reasons for drinking: To increase the effects of other drug(s)

		Frequency	Percent	Valid Percent	Cumulative Percent
Valid	No answer	8	1.7	1.7	1.7
	Yes	13	2.8	2.8	4.5
	No	442	95.3	95.3	99.8
	Unsure	1	.2	.2	100.0
	Total	464	100.0	100.0	

Reasons for drinking: To decrease the effects of other drug(s)

		Frequency	Percent	Valid Percent	Cumulative Percent
Valid	No answer	6	1.3	1.3	1.3
	Yes	4	.9	.9	2.2
	No	453	97.6	97.6	99.8
	Unsure	1	.2	.2	100.0
	Total	464	100.0	100.0	

Reasons for drinking: To get to sleep

		Frequency	Percent	Valid Percent	Cumulative Percent
Valid	No answer	8	1.7	1.7	1.7
	Yes	55	11.9	11.9	13.6
	No	399	86.0	86.0	99.6
	Unsure	2	.4	.4	100.0
	Total	464	100.0	100.0	

Reasons for drinking: Because it tastes good

		Frequency	Percent	Valid Percent	Cumulative Percent
Valid	No answer	7	1.5	1.5	1.5
	Yes	269	58.0	58.0	59.5
	No	187	40.3	40.3	99.8
	Unsure	1	.2	.2	100.0
	Total	464	100.0	100.0	

Reasons for drinking: To get away from my problems

		Frequency	Percent	Valid Percent	Cumulative Percent
Valid	No answer	9	1.9	1.9	1.9
	Yes	45	9.7	9.7	11.6
	No	404	87.1	87.1	98.7
	Unsure	6	1.3	1.3	100.0
	Total	464	100.0	100.0	

Usual type of alcohol

		Frequency	Percent	Valid Percent	Cumulative Percent
Valid	No answer	8	1.7	1.7	1.7
	I did not drink alcohol	104	22.4	22.4	24.1
	Beer	121	26.1	26.1	50.2
	Malt beverages	26	5.6	5.6	55.8
	Wine coolers	8	1.7	1.7	57.5
	Wine	85	18.3	18.3	75.9
	Liquor	103	22.2	22.2	98.1
	Some other type	9	1.9	1.9	100.0
	Total	464	100.0	100.0	

Frequency of binge drinking during the last two weeks

		Frequency	Percent	Valid Percent	Cumulative Percent
Valid	0	335	72.2	72.2	72.2
	1	63	13.6	13.6	85.8
	2	30	6.5	6.5	92.2
	3	10	2.2	2.2	94.4
	4	10	2.2	2.2	96.6
	5	5	1.1	1.1	97.6
	6	3	.6	.6	98.3
	7	3	.6	.6	98.9
	10	5	1.1	1.1	100.0
	Total	464	100.0	100.0	

**Perceived number of alcoholic drinks consumed by the typical student
at the last party**

		Frequency	Percent	Valid Percent	Cumulative Percent
Valid	0	32	6.9	6.9	6.9
	1	5	1.1	1.1	8.0
	2	34	7.3	7.3	15.3
	3	60	12.9	12.9	28.2
	4	77	16.6	16.6	44.8
	5	111	23.9	23.9	68.8
	6	58	12.5	12.5	81.3
	7	21	4.5	4.5	85.8
	8	23	5.0	5.0	90.7
	9	3	.6	.6	91.4
	10	18	3.9	3.9	95.3
	12	3	.6	.6	95.9
	14	1	.2	.2	96.1
	15	9	1.9	1.9	98.1
	20	3	.6	.6	98.7
	25	2	.4	.4	99.1
	36	1	.2	.2	99.4
	50	1	.2	.2	99.6
	88	1	.2	.2	99.8
	89	1	.2	.2	100.0
	Total	464	100.0	100.0	

Gambling: Played cards at home

		Frequency	Percent	Valid Percent	Cumulative Percent
Valid	-9	2	.4	.4	.4
	Never	398	85.8	85.8	86.2
	1-2 times per year	42	9.1	9.1	95.3
	3-6 times per year	18	3.9	3.9	99.1
	Monthly	3	.6	.6	99.8
	Weekly	1	.2	.2	100.0
	Total	464	100.0	100.0	

Gambling: Gambled at a casino

		Frequency	Percent	Valid Percent	Cumulative Percent
Valid	-9	3	.6	.6	.6
	Never	363	78.2	78.2	78.9
	1-2 times per year	86	18.5	18.5	97.4
	3-6 times per year	11	2.4	2.4	99.8
	Monthly	1	.2	.2	100.0
	Total	464	100.0	100.0	

Gambling: Gambled on-line

		Frequency	Percent	Valid Percent	Cumulative Percent
Valid	-9	4	.9	.9	.9
	Never	452	97.4	97.4	98.3
	1-2 times per year	6	1.3	1.3	99.6
	3-6 times per year	2	.4	.4	100.0
	Total	464	100.0	100.0	

Gambling: Bet on fantasy football/basketball

		Frequency	Percent	Valid Percent	Cumulative Percent
Valid	-9	2	.4	.4	.4
	Never	436	94.0	94.0	94.4
	1-2 times per year	24	5.2	5.2	99.6
	3-6 times per year	2	.4	.4	100.0
	Total	464	100.0	100.0	

Gambling: Betting pools

		Frequency	Percent	Valid Percent	Cumulative Percent
Valid	-9	5	1.1	1.1	1.1
	Never	417	89.9	89.9	90.9
	1-2 times per year	39	8.4	8.4	99.4
	3-6 times per year	2	.4	.4	99.8
	Weekly	1	.2	.2	100.0
	Total	464	100.0	100.0	

Gambling: Lottery

		Frequency	Percent	Valid Percent	Cumulative Percent
Valid	-9	4	.9	.9	.9
	Never	313	67.5	67.5	68.3
	1-2 times per year	78	16.8	16.8	85.1
	3-6 times per year	47	10.1	10.1	95.3
	Monthly	14	3.0	3.0	98.3
	Weekly	8	1.7	1.7	100.0
	Total	464	100.0	100.0	

Gambling: Placed bet with bookie

		Frequency	Percent	Valid Percent	Cumulative Percent
Valid	-9	5	1.1	1.1	1.1
	Never	458	98.7	98.7	99.8
	1-2 times per year	1	.2	.2	100.0
	Total	464	100.0	100.0	

Consequences of gambling: Academic problems

		Frequency	Percent	Valid Percent	Cumulative Percent
Valid	-9	3	.6	.6	.6
	I do not gamble	334	72.0	72.0	72.6
	None	127	27.4	27.4	100.0
	Total	464	100.0	100.0	

Consequences of gambling: Issues with legal system

		Frequency	Percent	Valid Percent	Cumulative Percent
Valid	-9	3	.6	.6	.6
	I do not gamble	333	71.8	71.8	72.4
	None	128	27.6	27.6	100.0
	Total	464	100.0	100.0	

Consequences of gambling: Financial issues

		Frequency	Percent	Valid Percent	Cumulative Percent
Valid	-9	4	.9	.9	.9
	I do not gamble	332	71.6	71.6	72.4
	None	127	27.4	27.4	99.8
	Occasionally	1	.2	.2	100.0
	Total	464	100.0	100.0	

Consequences of gambling: Felt bad about gambling

		Frequency	Percent	Valid Percent	Cumulative Percent
Valid	-9	4	.9	.9	.9
	I do not gamble	333	71.8	71.8	72.6
	None	121	26.1	26.1	98.7
	Occasionally	6	1.3	1.3	100.0
	Total	464	100.0	100.0	

Consequences of gambling: Poor physical health

		Frequency	Percent	Valid Percent	Cumulative Percent
Valid	-9	4	.9	.9	.9
	I do not gamble	332	71.6	71.6	72.4
	None	128	27.6	27.6	100.0
	Total	464	100.0	100.0	

Consequences of gambling: Issues with friends and family

		Frequency	Percent	Valid Percent	Cumulative Percent
Valid	-9	5	1.1	1.1	1.1
	I do not gamble	331	71.3	71.3	72.4
	None	128	27.6	27.6	100.0
	Total	464	100.0	100.0	

Gender

		Frequency	Percent	Valid Percent	Cumulative Percent
Valid	Male	184	39.7	39.7	39.7
	Female	280	60.3	60.3	100.0
	Total	464	100.0	100.0	

Ethnicity

		Frequency	Percent	Valid Percent	Cumulative Percent
Valid	No answer	3	.6	.6	.6
	Hispanic	14	3.0	3.0	3.7
	Non-Hispanic	447	96.3	96.3	100.0
	Total	464	100.0	100.0	

Race

		Frequency	Percent	Valid Percent	Cumulative Percent
Valid	No answer	2	.4	.4	.4
	White	385	83.0	83.0	83.4
	Black	21	4.5	4.5	87.9
	Asian	25	5.4	5.4	93.3
	Native American or Alaskan Native	1	.2	.2	93.5
	Hawaiian or Pacific Islander	1	.2	.2	93.8
	More than one race	17	3.7	3.7	97.4
	Other	12	2.6	2.6	100.0
	Total	464	100.0	100.0	

Ethnic identity: Spent time trying to find more information

		Frequency	Percent	Valid Percent	Cumulative Percent
Valid	No answer	6	1.3	1.3	1.3
	Strongly agree	66	14.2	14.2	15.5
	Agree	103	22.2	22.2	37.7
	Neither agree or disagree	130	28.0	28.0	65.7
	Dsagree	90	19.4	19.4	85.1
	Strongly disagree	69	14.9	14.9	100.0
	Total	464	100.0	100.0	

Ethnic identity: Strong sense of belonging

		Frequency	Percent	Valid Percent	Cumulative Percent
Valid	No answer	9	1.9	1.9	1.9
	Strongly agree	73	15.7	15.7	17.7
	Agree	122	26.3	26.3	44.0
	Neither agree or disagree	167	36.0	36.0	80.0
	Dsagree	58	12.5	12.5	92.5
	Strongly disagree	35	7.5	7.5	100.0
	Total	464	100.0	100.0	

Ethnic identity: Understand ethnic group membership

		Frequency	Percent	Valid Percent	Cumulative Percent
Valid	No answer	8	1.7	1.7	1.7
	Strongly agree	76	16.4	16.4	18.1
	Agree	140	30.2	30.2	48.3
	Neither agree or disagree	162	34.9	34.9	83.2
	Dsagree	46	9.9	9.9	93.1
	Strongly disagree	32	6.9	6.9	100.0
	Total	464	100.0	100.0	

Ethnic identity: Often done things to understand

		Frequency	Percent	Valid Percent	Cumulative Percent
Valid	No answer	12	2.6	2.6	2.6
	Strongly agree	45	9.7	9.7	12.3
	Agree	100	21.6	21.6	33.8
	Neither agree or disagree	164	35.3	35.3	69.2
	Dsagree	89	19.2	19.2	88.4
	Strongly disagree	54	11.6	11.6	100.0
	Total	464	100.0	100.0	

Ethnic identity: Talked to other people to learn more

		Frequency	Percent	Valid Percent	Cumulative Percent
Valid	No answer	12	2.6	2.6	2.6
	Strongly agree	41	8.8	8.8	11.4
	Agree	95	20.5	20.5	31.9
	Neither agree or disagree	151	32.5	32.5	64.4
	Dsagree	99	21.3	21.3	85.8
	Strongly disagree	66	14.2	14.2	100.0
	Total	464	100.0	100.0	

Ethnic identity: Strong attachment to my group

		Frequency	Percent	Valid Percent	Cumulative Percent
Valid	No answer	9	1.9	1.9	1.9
	Strongly agree	69	14.9	14.9	16.8
	Agree	89	19.2	19.2	36.0
	Neither agree or disagree	188	40.5	40.5	76.5
	Dsagree	64	13.8	13.8	90.3
	Strongly disagree	45	9.7	9.7	100.0
	Total	464	100.0	100.0	

Marital status

		Frequency	Percent	Valid Percent	Cumulative Percent
Valid	No answer	4	.9	.9	.9
	Single, never married	240	51.7	51.7	52.6
	Single, living with partner	60	12.9	12.9	65.5
	Married	140	30.2	30.2	95.7
	Divorced	18	3.9	3.9	99.6
	Widowed	2	.4	.4	100.0
	Total	464	100.0	100.0	

Employment status

		Frequency	Percent	Valid Percent	Cumulative Percent
Valid	No answer	2	.4	.4	.4
	Full-time	142	30.6	30.6	31.0
	Part-time	162	34.9	34.9	65.9
	No	158	34.1	34.1	100.0
	Total	464	100.0	100.0	

Approximate GPA

		Frequency	Percent	Valid Percent	Cumulative Percent
Valid	A	220	47.4	47.4	47.4
	B	210	45.3	45.3	92.7
	C	32	6.9	6.9	99.6
	D	1	.2	.2	99.8
	F	1	.2	.2	100.0
	Total	464	100.0	100.0	

Student status

		Frequency	Percent	Valid Percent	Cumulative Percent
Valid	No answer	5	1.1	1.1	1.1
	Full-time	338	72.8	72.8	73.9
	Part-time	121	26.1	26.1	100.0
	Total	464	100.0	100.0	

Classification

		Frequency	Percent	Valid Percent	Cumulative Percent
Valid	No answer	4	.9	.9	.9
	Freshman or first year	40	8.6	8.6	9.5
	Sophomore or second year	46	9.9	9.9	19.4
	Junior	84	18.1	18.1	37.5
	Senior	95	20.5	20.5	58.0
	Grad or professional	174	37.5	37.5	95.5
	Not seeking a degree	12	2.6	2.6	98.1
	Other	9	1.9	1.9	100.0
	Total	464	100.0	100.0	

Location of current residence

		Frequency	Percent	Valid Percent	Cumulative Percent
Valid	No answer	6	1.3	1.3	1.3
	On-campus	16	3.4	3.4	4.7
	Off-campus	442	95.3	95.3	100.0
	Total	464	100.0	100.0	

Housing type

		Frequency	Percent	Valid Percent	Cumulative Percent
Valid	No answer	2	.4	.4	.4
	House or apartment	449	96.8	96.8	97.2
	Residence hall	6	1.3	1.3	98.5
	Other	7	1.5	1.5	100.0
	Total	464	100.0	100.0	

Alone

		Frequency	Percent	Valid Percent	Cumulative Percent
Valid	No answer	397	85.6	85.6	85.6
	Yes	67	14.4	14.4	100.0
	Total	464	100.0	100.0	

With roomates

		Frequency	Percent	Valid Percent	Cumulative Percent
Valid	No answer	358	77.2	77.2	77.2
	Yes	106	22.8	22.8	100.0
	Total	464	100.0	100.0	

With parents

		Frequency	Percent	Valid Percent	Cumulative Percent
Valid	No answer	370	79.7	79.7	79.7
	Yes	94	20.3	20.3	100.0
	Total	464	100.0	100.0	

With spouse

		Frequency	Percent	Valid Percent	Cumulative Percent
Valid	No answer	300	64.7	64.7	64.7
	Yes	164	35.3	35.3	100.0
	Total	464	100.0	100.0	

With children

		Frequency	Percent	Valid Percent	Cumulative Percent
Valid	No answer	369	79.5	79.5	79.5
	Yes	95	20.5	20.5	100.0
	Total	464	100.0	100.0	

Other

		Frequency	Percent	Valid Percent	Cumulative Percent
Valid	No answer	427	92.0	92.0	92.0
	Yes	37	8.0	8.0	100.0
	Total	464	100.0	100.0	